

2UH Series



Eaton's 2UH Series quick disconnect coupling is a ball latch coupling used in high pressure hydraulic applications exceeding 20,000 psi or 1,500 bar.

Product Features

- Pull-to-connect high-pressure coupling
- Standard body material: High tensile steel with anticorrosion finish, hardened steel sleeve
- Standard seal material: NBR
- Blue PVC dust caps and plugs

Physical Characteristics

Coupling Size	DN/ND	Max. Operating Pressure		Rated Flow		Spillage
(in)		(bar)	(psi)	(lpm)	(gpm)	ml max
¼	2.5	1,500	21,750	3	0.79	0.005

Applications & Markets

- High-pressure Hydraulic Equipment:
 - Lifts
 - Jacks
 - Shears
 - Pullers

Flow Data

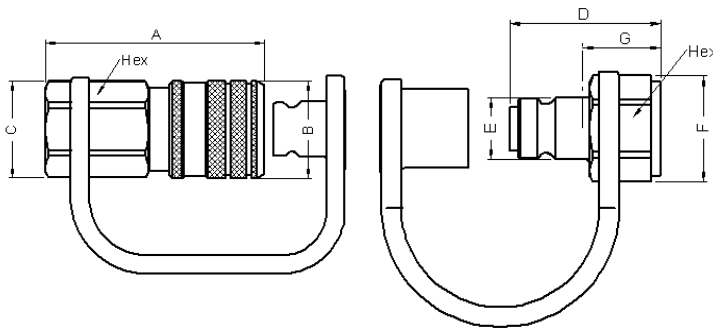
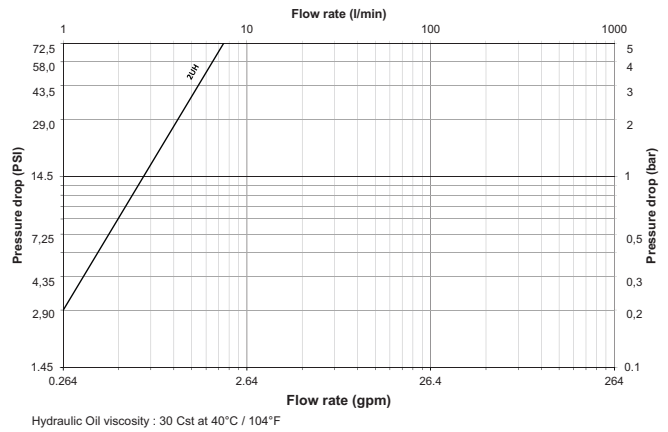


Figure 1

Figure 2

Dimensions

Size	DN/ND	Socket/Female and Dust Plug	Socket/Female Dust Plug Only	Coupling Type	Connection	Fig. A	B	C	Hex		
(in)						(mm)	(mm)	(mm)	(mm)		
¼	2.5	2UHS25BS 2UHS25	PSDC2UH	Socket/Female	G ¼ ¼ NPT	1	60	12	27	24	
Size	DN/ND	Socket/Female and Dust Plug	Socket/Female Dust Plug Only	Coupling Type	Connection	Fig. D	E	F	G	Hex	
(in)						(mm)	(mm)	(mm)	(mm)	(mm)	
¼	2.5	2UHP25BS 2UHP25	PPDC2UH	Plug/Male	G ¼ ¼ NPT	2	38	12	15.6	19.6	24

Danfoss丹佛斯中国签约经销商：北京汉深流体技术有限公司

地址：北京朝阳区望京 SOHO-T1-C座 2115 室 邮编：100102

72 手机：139 1096 2635 电子邮件：sales@cnmec.biz