

Pressure Gauge Kit

FF14802

Diagnostic



Danfoss' Pressure Gauge Kit and screw together test couplings provide accurate and efficient pressure control and monitoring of your hydraulic system, while minimizing the introduction of contamination. The complete kit is pre-packaged with Danfoss' most common adapters and test couplings.

Product Features

- Test system at working pressure
- 630 bar (9,000 psi) working pressure
- 345 bar (5,000 psi) connect under pressure
- Accurate pressure control and system monitoring
- Leak-free connection before piston valve opens

- Simple and fast screw together connections
- Self-locking caps

Applications & Markets

- Hydraulics and mineral based fluids
- Agricultural equipment
- Construction equipment
- On-Highway vehicles
- Industrial equipment

Couplings/Adapters

- Standard body material: Zinc Nickel Plated Steel
- Standard seal material: FKM
- 345 bar (5,000 psi) connect under pressure
- 630 bar (9,000 psi) working pressure

Hose Assemblies

- 630 bar (9,000 psi) working pressure
- 20mm (.75") bend radius
- Nominal Bore 2mm (.08")
- Hose cover/core – PA 11/12
- Reinforcement – synthetic fiber

Gauges

- Polished Brass Casing
- Glycerine Filled
- Dual Scales
- Relief Valve
- Acrylic Lens

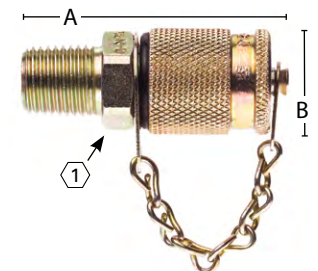
Pressure Gauge Kit

| Complete Kit Number | Component Part Number | Description | Quantity Per Kit |
|---------------------|-----------------------|---------------------------|------------------|
| FF14802 | FF14783 | 1/8"NPT Test Coupling | 2 |
| | FF14784 | 1/4"NPT Test Coupling | 2 |
| | FF14787 | 7/16-20 UNF Test Coupling | 1 |
| | FF14788 | 9/16-18 UNF Test Coupling | 1 |
| | FF14794 | 1/4"NPT Gauge Adapter | 3 |

| Complete Kit Number | Component Part Number | Description | Quantity Per Kit |
|---------------------|-----------------------|-----------------------------|------------------|
| | FF14796 | Union Adapter | 2 |
| | FF14798 | 60" Test Hose Assembly | 2 |
| | FF14799 | (-) 30 in/Hg - 30 psi Gauge | 1 |
| | FF14800 | 1,000 psi Gauge | 1 |
| | FF14801 | 7,500 psi Gauge | 1 |

Dimensions (Standard Test Couplings)

| Part Number | Thread | Dimensions | | Hex ^① | Bag | Quantity* | |
|-------------|-------------|------------|--------|------------------|-------|------------|---|
| | | A | B | | | | |
| | | mm | (in) | mm | (in) | | |
| FF14783 | 1/8"NPT | 45.0 | (1.77) | 20.0 | (.79) | 17.0 (.67) | 4 |
| FF14784 | 1/4"NPT | 50.0 | (1.97) | 20.0 | (.79) | 17.0 (.67) | 4 |
| FF14785 | M14 | 49.0 | (1.93) | 20.0 | (.79) | 19.0 (.75) | 3 |
| FF14786 | M16 | 48.5 | (1.91) | 20.0 | (.79) | 22.0 (.87) | 3 |
| FF14787 | 7/16-20 UNF | 47.0 | (1.85) | 20.0 | (.79) | 17.0 (.67) | 4 |
| FF14788 | 9/16-18 UNF | 47.5 | (1.87) | 20.0 | (.79) | 19.0 (.75) | 4 |

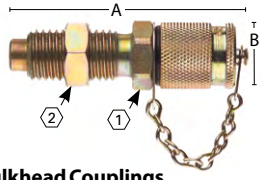


Standard Test Couplings

*When the indicated part number is ordered, the bag quantity is the number of pieces supplied. For example, if a quantity of one FF14792 is ordered, one bag containing two pieces will be delivered.

Dimensions (Bulkhead Couplings)

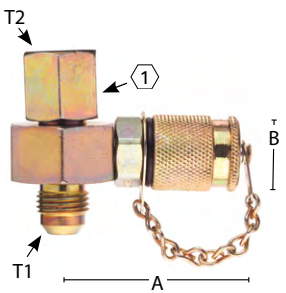
| Part Number | Thread | Dimensions | | | | Hex ① | | Hex ② | | Bag Quantity* |
|-------------|--------|------------|--------|------|-------|-------|-------|-------|-------|---------------|
| | | A | | B | | mm | (in) | mm | (in) | |
| | | mm | (in) | mm | (in) | mm | (in) | mm | (in) | |
| FF14789 | M16 | 72.0 | (2.83) | 20.0 | (.79) | 17.0 | (.67) | 19.0 | (.75) | 2 |



Bulkhead Couplings

Dimensions (Swivel Run Tee with Test Coupling)

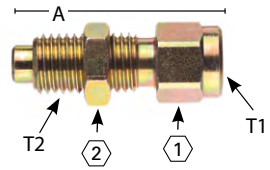
| Part Number | Thread #1 | Thread #2 | Dimensions | | | | Hex ① | | Bag Quantity* |
|-------------|-------------|-------------|------------|--------|------|-------|-------|--------|---------------|
| | | | A | | B | | mm | (in) | |
| | | | mm | (in) | mm | (in) | mm | (in) | |
| FF14790 | 7/16-20 UNF | 7/16-20 UNF | 47.7 | (1.88) | 20.0 | (.79) | 27.0 | (1.06) | 2 |
| FF14791 | 9/16-18 UNF | 9/16-18 UNF | 47.7 | (1.88) | 20.0 | (.79) | 27.0 | (1.06) | 2 |
| FF14792 | 3/4-16 UNF | 3/4-16 UNF | 47.7 | (1.88) | 20.0 | (.79) | 27.0 | (1.06) | 2 |



Swivel Run Tee with Test Coupling

Dimensions (Gauge Adapter)

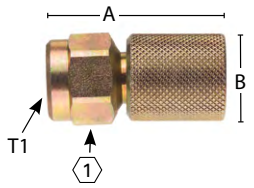
| Part Number | Thread #1 | Thread #2 | Dimensions | | | | Hex ① | | Hex ② | | Bag Quantity* |
|-------------|-----------|-----------|------------|--------|------|-------|-------|-------|-------|-------|---------------|
| | | | A | | B | | mm | (in) | mm | (in) | |
| | | | mm | (in) | mm | (in) | mm | (in) | mm | (in) | |
| FF14793 | 1/4"NPT | M16 | 54.0 | (2.13) | 19.0 | (.75) | 19.0 | (.75) | 19.0 | (.75) | 2 |



Gauge Adapter

Dimensions (Direct Gauge Adapter)

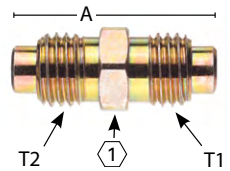
| Part Number | Thread | Dimensions | | | | Hex ① | | Bag Quantity* |
|-------------|-------------|------------|--------|------|-------|-------|-------|---------------|
| | | A | | B | | mm | (in) | |
| | | mm | (in) | mm | (in) | mm | (in) | |
| FF14794 | 1/4"NPT | 40.5 | (1.59) | 20.0 | (.79) | 19.0 | (.75) | 2 |
| FF14795 | 7/16-20 UNF | 41.0 | (1.61) | 20.0 | (.79) | 19.0 | (.75) | 2 |



Direct Gauge Adapter

Dimensions (Union Adapter)

| Part Number | Thread #1 | Thread #2 | Dimensions | | | | Hex ① | | Bag Quantity* |
|-------------|-----------|-----------|------------|--------|------|-------|-------|------|---------------|
| | | | A | | B | | mm | (in) | |
| | | | mm | (in) | mm | (in) | mm | (in) | |
| FF14796 | M16 | M16 | 42.5 | (1.67) | 17.0 | (.67) | | | 2 |



Union Adapter

Dimensions (Test Hose Assembly)

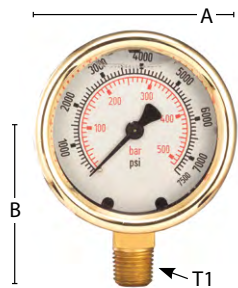
| Part Number | Thread | Dimensions | | | | Bag Quantity* |
|-------------|--------|------------|---------|----------------|---------|---------------|
| | | Cut Length | | Overall Length | | |
| | | mm | (in) | mm | (in) | |
| FF14797 | M16 | 872.0 | (34.33) | 914.4 | (36.00) | 1 |
| FF14798 | M16 | 1482.0 | (58.35) | 1524.0 | (60.00) | 1 |



Test Hose Assembly

Dimensions (Gauges)

| Part Number | Thread | Dimensions | | | | Rating | Bag Quantity* |
|-------------|---------|------------|--------|------|--------|----------------------|---------------|
| | | A | | B | | | |
| | | mm | (in) | mm | (in) | | |
| FF14799 | 1/4"NPT | 65.3 | (2.57) | 53.3 | (2.10) | (-)30 in/Hg - 30 psi | 1 |
| FF14800 | 1/4"NPT | 65.3 | (2.57) | 53.3 | (2.10) | 0 - 1,000 psi | 1 |
| FF14801 | 1/4"NPT | 65.3 | (2.57) | 53.3 | (2.10) | 0 - 7,500 psi | 1 |



Gauges